

TITGEMEYER[®] GTO

YOUR SOLUTION

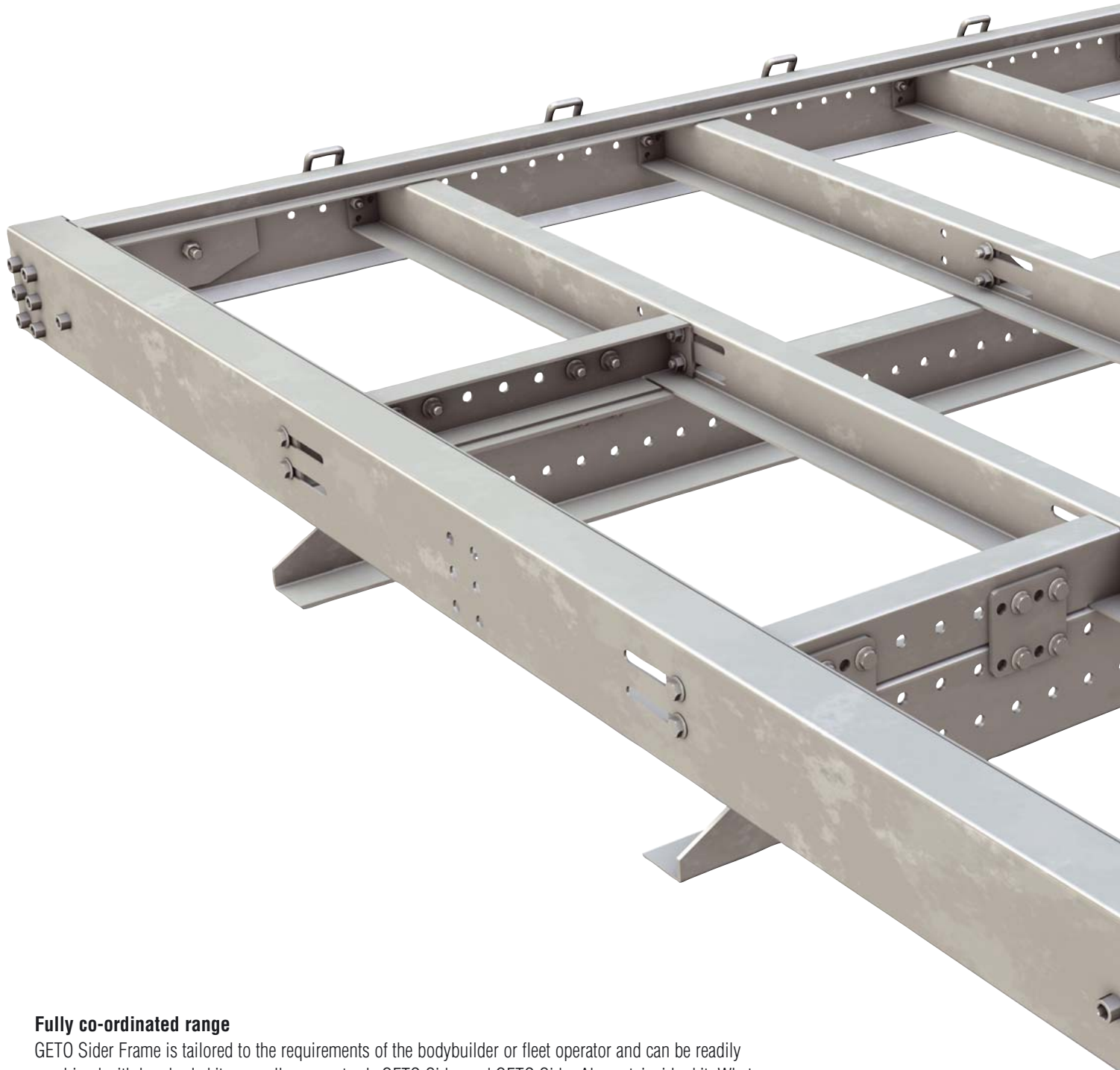
- Quick installation
- Hot-dip galvanised
- Made of high-strength, fine-grain steel
- Fully bolted assembly

■ GETO[®] Sider Frame

Base assembly for truck chassis



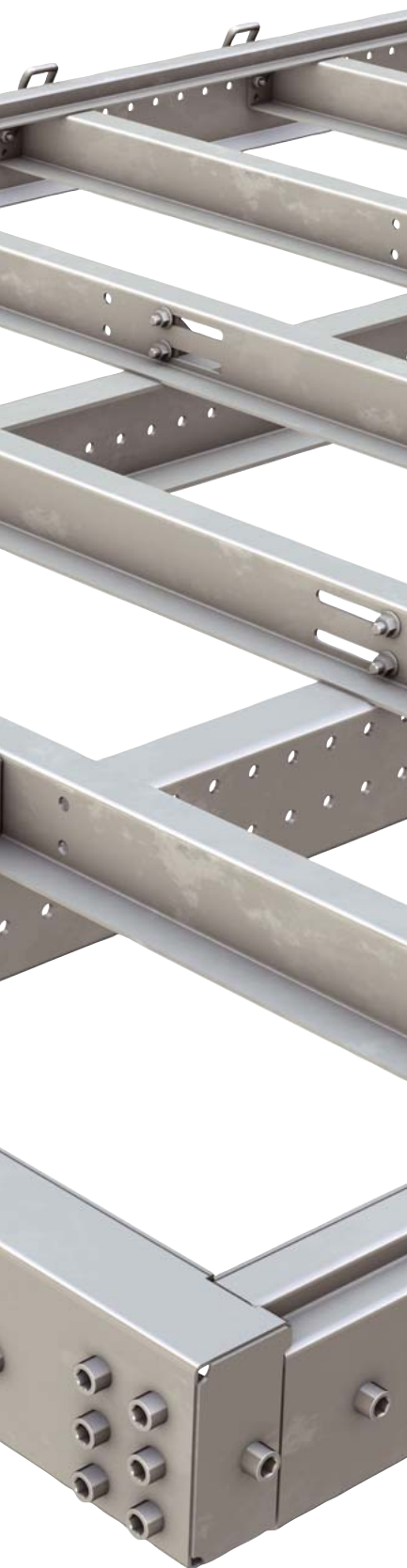
GETO® SiderFrame base assembly for truck chassis



Fully co-ordinated range

GETO Sider Frame is tailored to the requirements of the bodybuilder or fleet operator and can be readily combined with box body kits as well as our sturdy GETO Sider and GETO Sider Alu curtainsider kit. Whatever the style or design chosen, the focus is on quality: only high-strength, fine-grained steels are used. A hot-dip galvanising process ensures all components are protected against corrosion. This eliminates the need for any additional painting or coating. The side raves include integrated cargo-control rings. Every GETO Sider Frame version perfectly complements the range of certified TITGEMEYER systems, offering safety and reliability to manufacturers and operators in the commercial vehicle sector.

GETO® Sider Frame base assembly for truck chassis



Quality and durability

The GETO Sider Frame base assembly is yet another part of TITGEMEYER'S extensive vehicle component range. This base assembly has been developed with vehicles with a maximum gross vehicle weight of between 7.5 and 26 tonnes in mind. The base assembly's end-to-end and offset end members and the side raves all measure 150 mm in height. The side rave profiles are available with a floor recess of either 21 mm or 27 mm, with three different longitudinal member sizes. Also included in the GETO Sider Frame package is a framework assembly for the rear wheel arch cut-out which can be supplied in 1000 mm or 1250 mm lengths as needed. Once the longitudinal members and side rave profiles have been trimmed, the base assembly is installed using nothing but screws. None of the individual base assembly parts need to be welded. Fast and uncomplicated build times are therefore ensured.

Features at a glance

- Base assembly is fitted with nothing but screws; every single base assembly part is pre-drilled
- All steel components are made of hot-dip galvanised, high-strength S355MC fine-grain steel
- Maximum overall length of base assembly 7950 mm
- Overall length is variable in increments of 25 mm
- Maximum overall width of base assembly 2480 mm
- Three longitudinal member heights: 100, 120 und 140 mm
- Variable spacing between longitudinal members: 700 to 880 mm
- Side rave heights: 150 mm Floor recesses 21 and 27 mm
- Spacing between cross-members: 500 and 625 mm possible; alternatively adjustable in increments of 25 mm

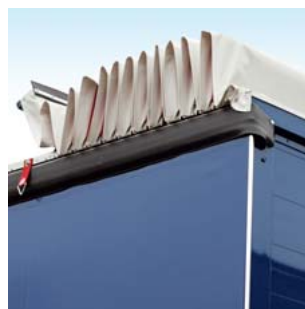
Adjustments in the spacing between the cross-members will need to be made by the bodybuilder depending on the required loads.

- Wheel arch cut-out sub-assembly supplied: Lengths 1000 or 1250 mm
- Assembly components such as reinforcing brackets, assembly plates as well as chassis brackets and fasteners are supplied
- Cargo control integrated into side rave in compliance with DIN EN 12640
- Lashing bars including fixing plate and nuts with a tensile force of 2000 daN supplied as standard; lashing bars with a tensile force of 2500 daN available on request
- Hole pattern for installing the GETO Sider and GETO Sider Alu kit supplied
- Hole pattern for installing the door gear keepers on the GETO Megaport II flush rear door supplied

Co-ordinated products



GETO® Sider

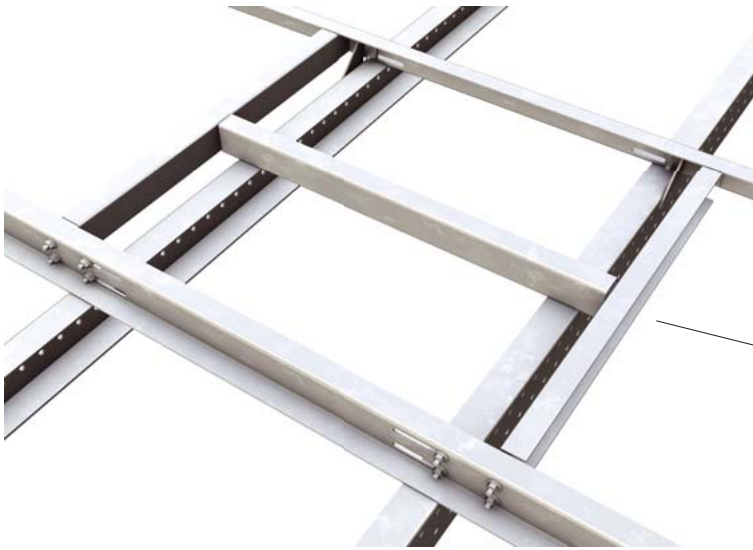


GETO® Versus



GETO® Megaport II

GETO® Sider Frame base assembly for truck chassis



Variable cross member position

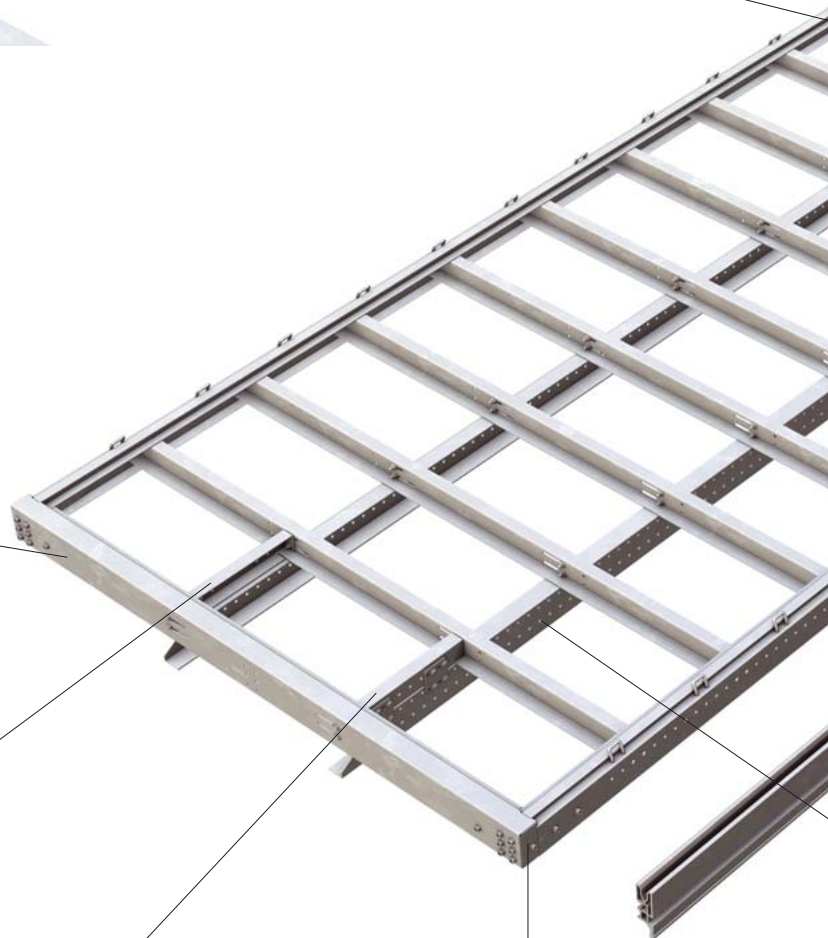
Four pre-drilled holes allow the cross members to be fitted at intervals of 25 mm, each one double-bolted to the rave members



Wheel arch cut-out
available in lengths of 1000 and 1250 mm



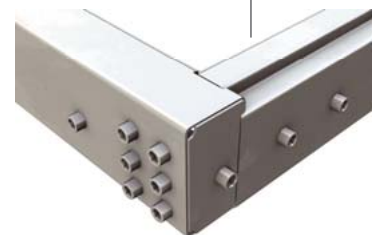
Front/rear member supplied pre-drilled



Longitudinal member
for front/rear members



Front member fixing
with auxiliary longitudinal members



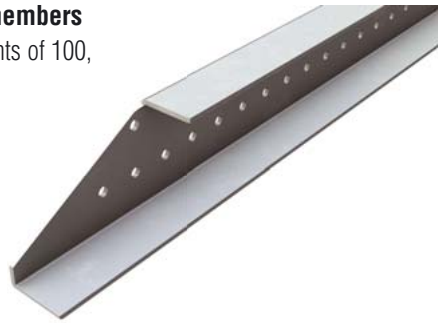
Reinforcement
for sliding pillar

GETO® Sider Frame base assembly for truck chassis



Universal chassis assembly plate

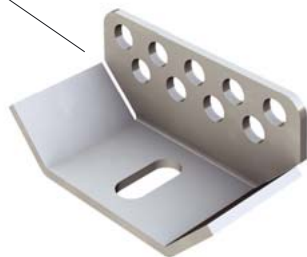
Longitudinal members
Available in heights of 100, 120 and 140 mm



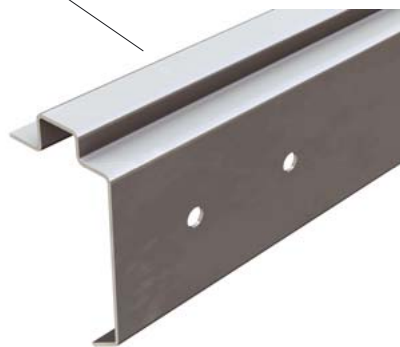
Aluminium ramming and impact protection profile



Cargo control
Integrated lashing rings for securing of loads



Universal chassis bracket



Straightforward assembly
Corners fitted with pre-drilled reinforcing brackets



Side rave
Supplied in left and right-handed configuration, can be cut to length as required

GETO® Sider Frame base assembly for truck chassis



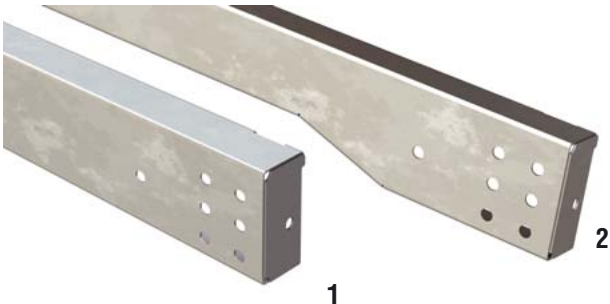
Cargo control for added safety

The side rails are fitted with lashing bars at intervals of 400 mm to ensure the cargo is secured. The lashing bars are supplied in the minimum quantities required by law. They have been tested to a tensile strength of 2000 daN, but can also be supplied for a tensile strength of 2500 daN on request. An extensive range of cargo control products is available.



Wheel arch cut-out assembly

GETO Frame has a prefabricated frame structure for the rear wheel arch in lengths of 1000 mm and 1250 mm as required.



End members

The front and rear end members for the base assembly have an external height of 150 mm to match the side rail profile. Two floor recesses are available, 21 and 27 mm respectively. For special demands (tail-lift, etc.), a set of 2 offset front/rear end members can also be supplied.



Longitudinal members

Available in heights of 100 mm, 120 mm or 140 mm at a length of 7800 mm, the longitudinal members can be combined with the base assembly.

The spacing between longitudinal members can be adjusted to anywhere between 700 mm and 880 mm as needed. The cross members can be bolted to the longitudinal members and side rail at intervals of 25 mm.



Aluminium ramming and impact protection profile

Bolted to the side rail profile to attach the vertical curtain fasteners and to house the BISON SafeSide aluminium cargo control battens as well as the cargo control battens for the pyramid profile.

Features at a glance

GETO Sider Frame base assemblies for gross vehicle weights from 7.5 to 26 tonnes.

GETO® Sider Frame base assembly dimensions

Description	Dimensions [mm]	Truck chassis	
		Up to approx. 12 t light	Up to approx. 26 t heavy- duty
Member height/floor recess	150 / 21	•	–
	150 / 27	–	•
Side rave height / floor recess	150 / 21	•	–
	150 / 27	–	•
Maximum overall length ¹	7950	•	•
Overall width (fix)	2480	•	•
Cross-section of longitudinal members	100x60x5	•	•
	120x60x6	•	•
	140x70x6	•	•
Length of longitudinal members	7800	•	•
Distance between longitudinal members	700 - 880	•	•
Distance between cross members ²	500 / 625	•	•
Length of wheel arch cut-out assembly	1000 / 1250	•	•
Distance between lashing points	400	•	•

¹ Always consult the vehicle manufacturer's assembly instructions

² The cross-member spacing can be altered in steps of 25 mm, in accordance with the load specifications established by the vehicle manufacturer. Smaller spacing may be selected if required, responsibility lies with the vehicle builder

GETO® Sider Frame base assembly materials

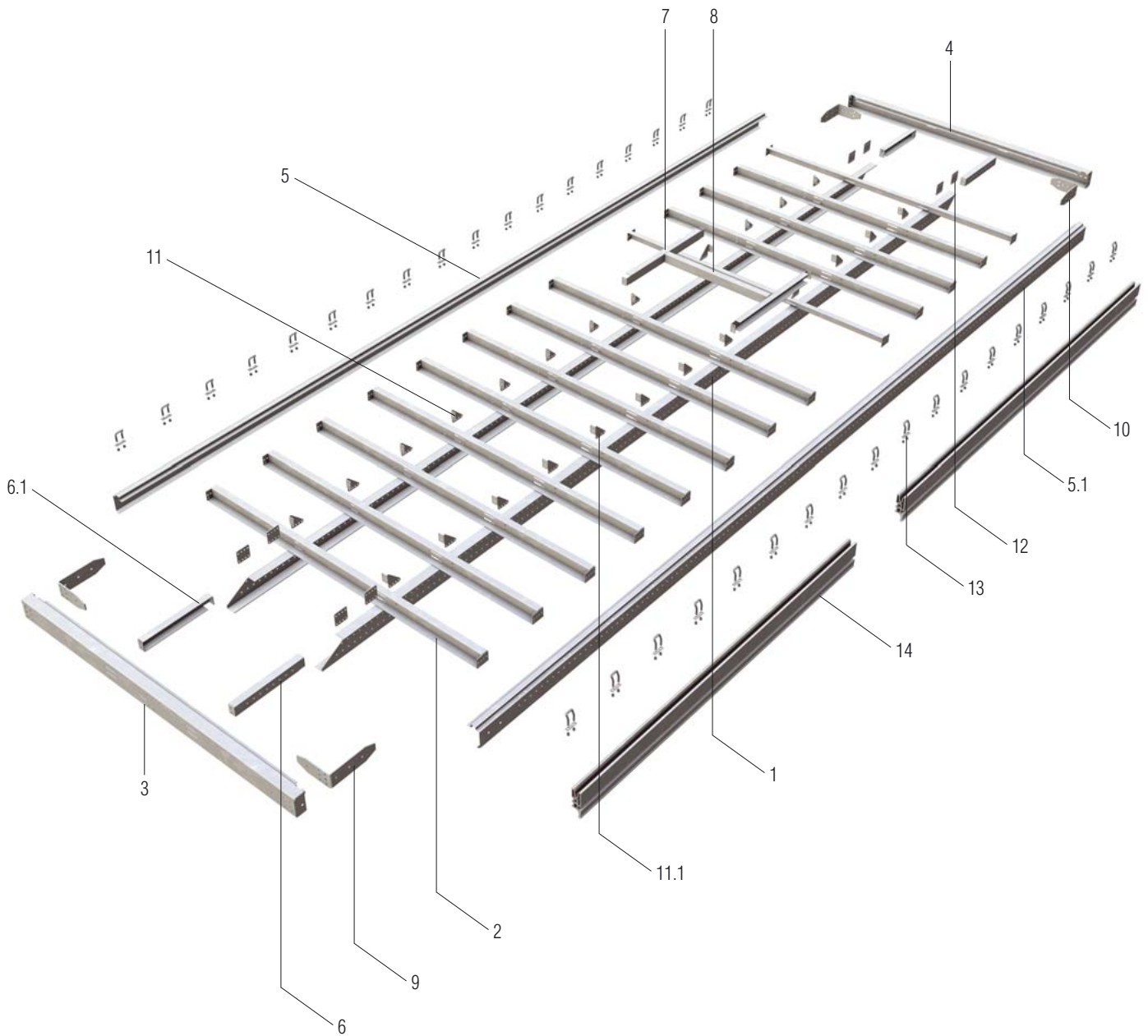
Description	Finish	Material
All steel components	Hot-dip galvanised	Fine-grain steel S 355 (QStE 380)

GETO® Sider Frame base assembly components

Description	Standard	To order
Complete base frame including bolts or lockbolts for assembly	•	–
Base frame pre-drilled	•	–
Hole template for GETO Sider kits and GETO Sider Alu	•	–
Hole template for GETO Gigaport and GETO Megaport II flush door lock keepers	•	–
Cargo control provided by the side rave in accordance with DIN EN 12640	•	–
Lashing rings with fixing plate and nuts, 2000 daN (Part No. 218 530)	•	–
Optional: Lashing shackle with fixing plate and nut, 2500 daN (218 532)	–	•
Assembly plates, reinforcing brackets	•	–
Lashing straps, minimum quantity	•	–
Additional lashing straps	–	•
Strengthened for sliding pillar	–	•
Strengthened for middle post	–	•
rear axle cut-out 1000/1250 mm	–	•
retracted end member front/rear	–	•
Universal chassis bracket	•	–
Universal chassis assembly plate	•	–

GETO® Sider Frame base assembly for truck chassis

GETO® Sider Frame base assembly parts list

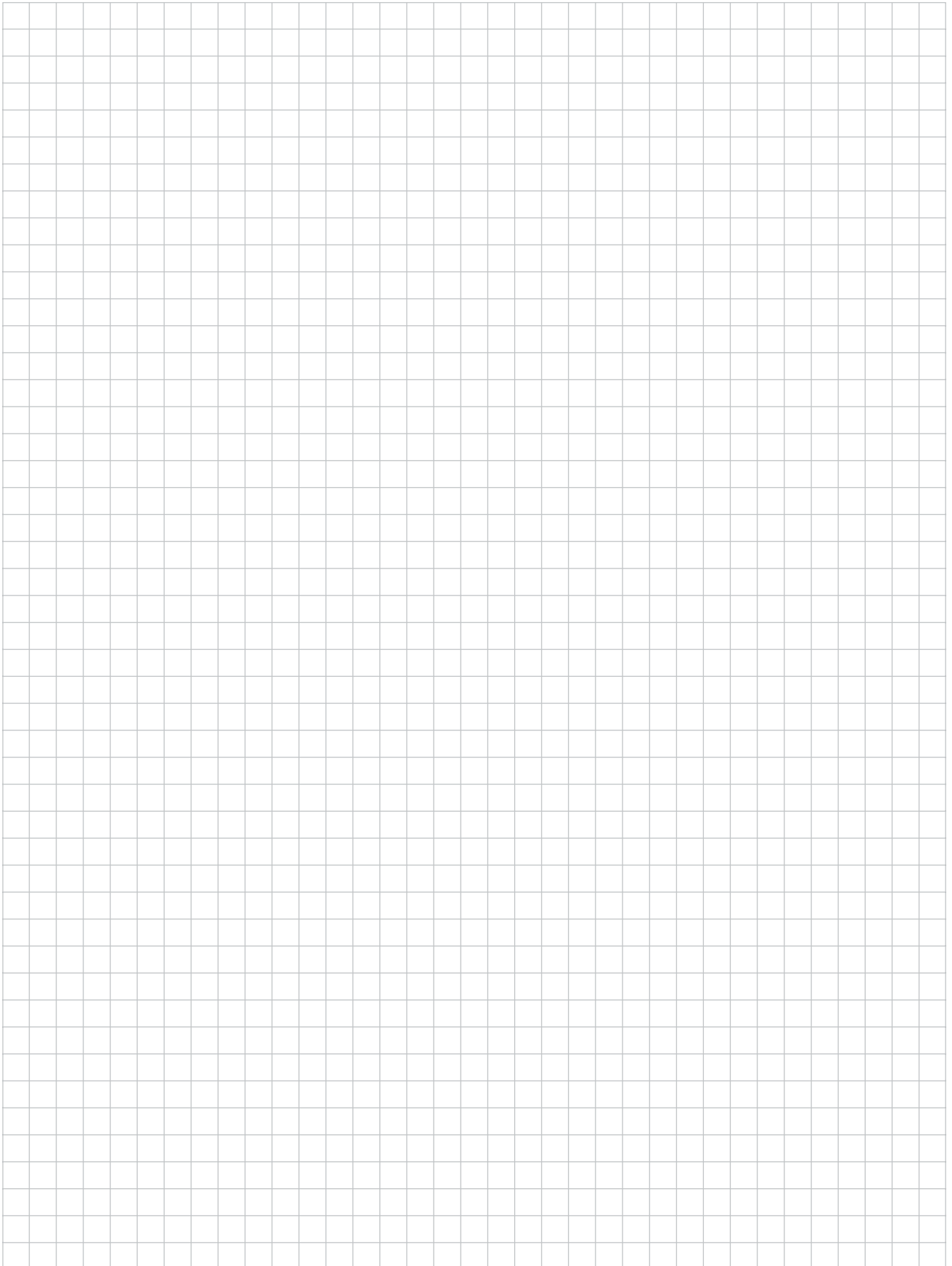


GETO® Sider Frame base assembly for truck chassis

GETO® Sider Frame base assembly parts list

Pos.	Bezeichnung	Länge [mm]	Gewicht ca.	Artikel-Nr.
1	Longitudinal members 100 x 60 x 5 mm	7800	7,7 kg/m	217 010 780
1	Longitudinal members 120 x 60 x 6 mm	7800	10,0 kg/m	217 012 780
1	Longitudinal members 140 x 70 x 6 mm	7800	11,8 kg/m	217 014 780
2	Cross member 100 x 80 x 4 mm	2474	13,6 kg/each	217 050 000
3	Front member 103 x 150 x 3 mm – floor recess 21 mm	2480	17,2 kg/each	217 038 000
not illustr.	Front member, offset, 112 x 150 x 4 mm – floor recess 21 mm	2480	20,7 kg/each	217 025 000
3	Front member 103 x 150 x 3 mm – floor recess 27 mm	2480	20,0 kg/each	217 030 000
not illustr.	Front member, offset, 112 x 150 x 4 mm – floor recess 27 mm	2480	22,1 kg/each	217 029 000
4	Rear member 103 x 150 x 3 mm – floor recess 21 mm	2480	17,2 kg/each	217 039 000
not illustr.	Rear member, offset, 112 x 150 x 4 mm – floor recess 21 mm	2480	20,7 kg/each	217 026 000
4	Rear member 103 x 150 x 3 mm – floor recess 27 mm	2480	20,0 kg/each	217 032 000
not illustr.	Rear member, offset, 112 x 150 x 4 mm – floor recess 27 mm	2480	22,1 kg/each	217 035 000
5	Side rave 150 x 98 x 3 r.h. – floor recess 21 mm	7800	5,9 kg/m	217 044 780
5	Side rave 150 x 98 x 3 l.h. – floor recess 27 mm	7800	6,9 kg/m	217 040 780
5.1.	Side rave 152 x 98 x 3 r.h. – floor recess 21 mm	7800	5,9 kg/m	217 045 780
5.1.	Side rave 152 x 98 x 3 l.h. – floor recess 27 mm	7800	6,9 kg/m	217 041 780
6	Auxiliary longitudinal members 545 x 50 x 80 x 4 for cross-member spacing 500 left	–	2,8 kg/each	217 060 001
6	Auxiliary longitudinal members 670 x 50 x 80 x 4 for cross-member spacing 625 left	–	3,5 kg/each	217 061 001
6.1.	Auxiliary longitudinal members 545 x 50 x 80 x 4 for cross-member spacing 500 right	–	2,8 kg/each	217 060 002
6.1.	Auxiliary longitudinal members 670 x 50 x 80 x 4 for cross-member spacing 625 right	–	2,8 kg/each	217 061 002
7	Longitudinal members, wheel arch 1246 x 50 x 80 x 4 mm	1250	6,4 kg/each	217 071 000
7	Longitudinal members, wheel arch 996 x 50 x 80 x 4 mm	1000	5,1 kg/each	217 072 000
8	Cross member, wheel arch 980 x 50 x 80 x 4 mm	980	5,3 kg/each	217 070 000
9	Front reinforcing bracket 350 x 270 x 110 x 8 mm	–	3,8 kg/each	217 080 000
10	Rear reinforcing bracket 300 x 250 x 110 x 8 mm	–	3,3 kg/each	217 081 000
11	Small fixing bracket r.h. 111 x 43 x 111 x 5 mm	–	0,23 kg/each	217 092 000
11.1	Small fixing bracket l.h. 111 x 43 x 111 x 5 mm	–	0,23 kg/each	217 093 000
12	Assembly plate 100 x 100 x 6 mm	–	0,42 kg/each	217 095 000
13	Lashing ring with plate and two lock nuts, for fixing to pre-drilled side rave profile, permissible tensile force of 2000 daN	–	0,3 kg/each	218 530 000
13.1. alternativ	Lashing shackle with plate and two lock nuts, for fixing to pre-drilled side rave profile, permissible tensile force of 2500 daN	–	0,35 kg/each	218 532 000
14	Aluminium ramming and impact protection profile	3500	3,6 kg/each	217 046 350
not illustr.	Reinforcement for sliding pillar	–	0,38 kg/each	217 097 000
not illustr.	Reinforcement side post	–	1,27 kg/each	246 048 000
not illustr.	Universal chassis bracket (variable)	–	0,44 kg/each	217 089 000
not illustr.	Universal chassis assembly plate (fixed)	–	0,51 kg/each	217 094 000
not illustr.	Lashing point sticker	–	–	612 396 000
not illustr.	Polystic caps for the unused lashing holes in the side rave	–	–	435 011 000
not illustr.	Fasteners	–	6 kg	217 099 000
not illustr.	Fasteners M 10 (for Pos. 14)	–	0,6 kg	217 099 014
not illustr.	Additional set of screws M 12	–	3,9 kg	217 099 013

NOTES





Gebr. TITGEMEYER GmbH & Co. KG

Hannoversche Straße 97

(Navigation: Hettlicher Masch 2)

49084 Osnabrück, Germany

P.O. Box 43 20

49033 Osnabrück, Germany

Phone: +49 (0)5 41/58 22-0

Fax: +49 (0)5 41/58 22-494

email: truckandtrailer@titgemeyer.com

www.titgemeyer.com